



# CORPORATE PROFILE 2018

**ELEMENT**  
2030

ISO 9001:2008  
LEVEL 1 B-BBEE CONTRIBUTOR  
135% PROCUREMENT RECOGNITION



Oxford Gate, Block C, 54 Oxford Street, Durbanville, 7550  
P O Box 3475, Durbanville, 7551  
Tel: +27 21 975 1718  
Fax: +27 21 976 8495  
E-mail: [2030@eceng.co.za](mailto:2030@eceng.co.za)

Element 2030 (Pty) Ltd Reg. No. 2017/365451/07

# Element 2030 (PTY) LTD

Element 2030 (Pty) Ltd is a start-up EME with a Level 1 BBBEE status and 135% procurement recognition level. Mr Gary Daniels and Mrs Marcelle Daniels started the company at the beginning of September 2017.

This young engineering company is based in Durbanville, Western Cape occupying offices on the top floor of Oxford Gate, Block C, 54 Oxford Street, Durbanville, 7551.

## **OWNERSHIP:**

### **Gary Mark Daniels**

*Gary has an extensive background of project management over various disciplines and fields of expertise. His track record and experience include: Mechanical works in the reactor and turbines installations at Koeberg Power Station, Fibre optic installation of Groote Schuur and University of Cape Town campuses, Botswana metrological weather station, Water Treatment plant in Gaborone (Botswana), Marine engineering and Shipping repair. In addition to this, also the management of a non-profit organisation for the transfer of life skills and upliftment of society.*

### **Marcelle Dawn Daniels (aka Shelley)**

*Shelley has a business management background and built her experience at SA Typographical Union. She gained extensive experience in business management and administration over more than the twenty years she was Head of the Department. In addition to this, also the management of a non-profit organisation for the transfer of life skills and upliftment of society.*

In addition to themselves, Mr and Mrs Daniels appointed to the new business two executive directors, i.e. Messrs Petrus J du Plessis and James A. Turner, both CESA Mandated Principals with more than 20 years' experience in Southern Africa in the fields of Civil Engineering, Contract Administration & Supervision, Electrical Engineering, Mechanical Engineering and Water & Sanitation Engineering.

Element 2030 (Pty) Ltd acquired 100% shareholding of Element Consulting Engineers (Pty) Ltd effective from 1 October 2017. The staff, infrastructure and track record of Element Consulting Engineers (Pty) Ltd falls under Element 2030 (Pty) Ltd with effect from 1 October 2017.

## **MISSION**

Element 2030 (Pty) Ltd will endeavour to provide superior engineering solutions to their Clients and broader Community.

We intend to provide the best professional engineering services, while, as part of our larger commitment to sustainability in our operational and procedural practices, we undertake to be conscious of improving the environmental, social and economic impact and aspects relating to our field of expertise.

We are putting into action programs and practices that reduce the use of natural resources, optimize energy efficient products and technologies and promoting innovations and creative solutions that add value for our clients, communities and our planet.

The practices and operations of Element 2030 (Pty) Ltd are to be carried out to be consistent with the principle goals and strategies of the company and as set out in the King II Report regarding Sustainability Reporting. We will ensure that our practices and procedures complies with all environmental, health and safety ordinances in the cities and regions in which we provide our services, as well as our own Health and Safety Policy.

Element 2030 (Pty) Ltd is committed to establishing, promoting, maintaining and improving a culture of sustainability and environmental responsibility by staff, our supply chain and subcontractors, and broader stakeholders both in the design and project management phases and procurement.

As part of our larger commitment to sustainability in the operational and procedural practices, we are also committed to providing the best, most sustainable services possible for our clients always. We are committed to track, measure and report on our performance of the implementation of sustainability practices to ensure continual improvement in these areas.

#### **COMPANY OVERVIEW**

- 100% Historically Disadvantaged Individual (HDI) Shareholding
- Staff Complement of 4 (4 Executive Directors of which 2 are CESA Registered Principals)
- 135% BBBEE Procurement Recognition Level; Status: Level 1 Contributor
- Registered with Consulting Engineers South Africa (CESA)
- Professional Indemnity Insurance Cover
- Quality Management System ISO 9001: 2015 – in process

#### **SCOPE OF SERVICES OFFERED**

##### **WATER & SANITATION ENGINEERING**

- Bulk Water Supply
- Bulk Sewage Systems
- Storm water Systems
- Pipelines
- Treatment Works
- Storm water Flood lines
- Hydraulic Structures
- Master Plan Investigations
- Agriculture/Irrigation

##### **ELECTRICAL INFRASTRUCTURE ENGINEERING**

- Township Reticulation – Low to High Income Housing
- Commercial and Industrial Developments
- Medium and High Voltage Power Lines and Substations
- Streetlighting
- Asset Management and Data Capturing
- Master Planning
- Telemetry and Supervisory Control and Data Acquisition
- Water, Sewerage and Desalination Plants
- Rooftop and Large-Scale Solar PV Systems
- Wind Generation
- Energy Storage Systems
- Energy Audits and Energy Efficiency Studies
- Act as GMR 2(1) Responsible Person
- Lightning and Surge Protection Design and Risk Assessments

##### **ELECTRICAL BUILDING SERVICES**

- Medium and Low Voltage Distribution
- Metering Applications
- Auxiliary Services Wire Way Distribution
- Embedded Generation and Standby Power Systems
- Generator Systems
- UPS Systems
- DC Inverter Systems
- Solar PV Cell Systems
- Wind Generation Systems

- Lighting Design and Software Simulations
- Emergency and Evacuation Lighting
- Functional, Architectural and Landscape Lighting
- Sport Field Lighting
- Stage Lighting
- Security Lighting
- Lighting Installation Audits
- Lightning Protection
- Energy Efficiency Audits and associated Energy Efficiency Reports
- Pump stations
- Energy Management Solutions
- Technical proposals
- Life Cycle and benefit Analysis
- Energy Audits
- Technology Implementation

#### **ELECTRONIC BUILDING SERVICES**

- Access & Time Control Systems
- Parking Management Services
- CCTV Surveillance Systems
- Security Systems and Integration
- Fire Detection & Automated Extinguishing Systems
- Communication Network Systems
- Conferencing Systems
- SAT-TV Terrestrial TV Signal distribution
- Internet Services Distribution
- Public Address and Audio Evacuation Systems
- Lighting Control Systems
- Building Management Systems
- Home Automation Systems
- Telemetry and SCADA Systems

#### **MECHANICAL ENGINEERING SERVICES**

##### **Plumbing:**

- Hot and Cold-water supply – Pipe Reticulation
- Drainage – Pipe Reticulation
- Cold water storage
- Hot water storage – Bulk hot water generator – Heat pumps – As required
- Waste water storage and installation of recycled water system
- Rain water storage and installation of secondary water system
- Water Treatment plant – As required
- Grey Water Treatment
- Black water Treatment

##### **Heating Ventilation and Air-Conditioning:**

- Air-Conditioning Control Systems
- Chilled water Generating Systems
- Air-handling Control Systems
- Ventilation Installation
- Heating and Cooling to specified temperature
- Humidity Control
- Acoustical Considerations
- Sustainability Initiatives as deemed appropriate to achieve the highest possible results for Green Star rating.

### **Fire Protection and Rational Fire Design**

- Fire Plans to show all Fire Equipment, Fire Escapes Routes and Fire Signage
- Automatic Sprinkler Installation
- Smoke Control / Smoke Ventilation
- Water supply for Fire Protection Services
- Water Storage and Pumped Supply
- Rational Fire Design

### **Lifts and Escalators**

#### **CIVIL INFRASTRUCTURE**

- Residential Developments
- Industrial Developments
- Bulk Water Supply
- Bulk Sewer Reticulation
- Sport Complexes and Facilities
- Labour Intensive Projects
- Low Cost Housing
- Roads/Bridges
- Reservoirs

#### **ROADS AND TRANSPORT**

- Material Investigations
- Visual Surveys
- Geometric Design
- Pavement Design
- Urban Transport
- Transport Networks
- Road Pavements

#### **STRUCTURAL ENGINEERING**

- Civil Structures
- Buildings includes Commercial Developments, Industrial Developments and Residential Units
- Bridges
- Water Retaining Structures
- Treatment Plants
- Project Specifications

#### **CONTRACT MANAGEMENT AND ADMINISTRATION**

- Cost Estimates
- Bill of Quantities
- Tender and Contract Documents
- Contract Award and Administration
- Construction Monitoring and Supervision
- Dispute Resolution, Claims Evaluations and Construction Adjudication
- As Built Records and Drawings

#### **DAM ENGINEERING SERVICES**

- Dam Services includes Embankment Dams, Concrete Dams, Tailings Dams, Pollution control dams, Off-channel storage dams and Retention & Attenuation dams
- Dam Safety Services includes Dam Safety Evaluations, Dam Operations Manuals, Emergency Preparedness Plans & Dam break analysis and Flood hydrology analysis

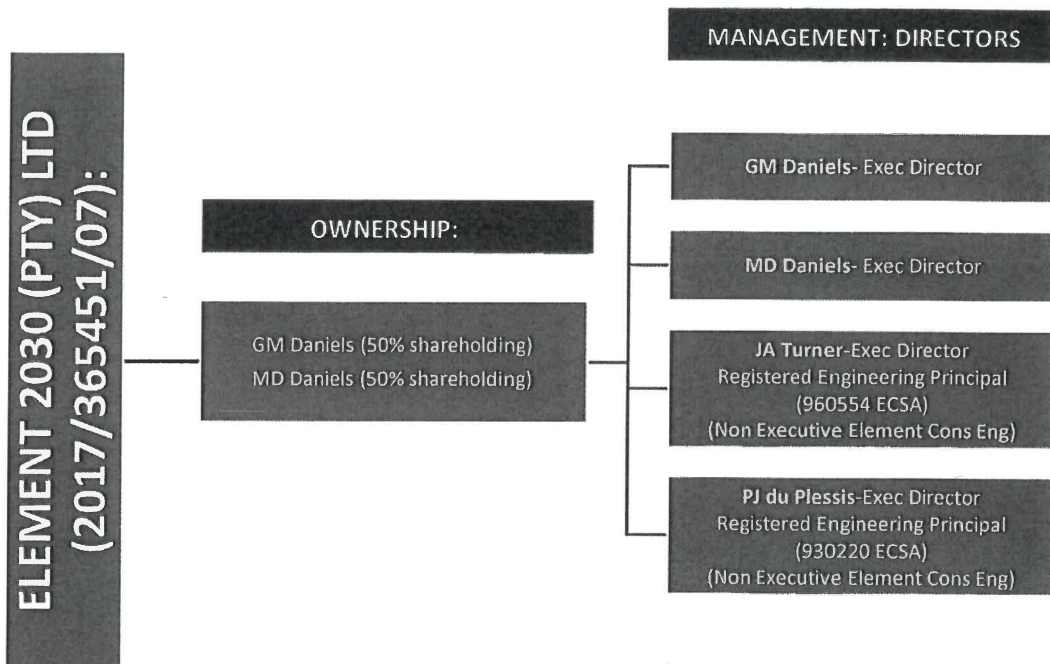
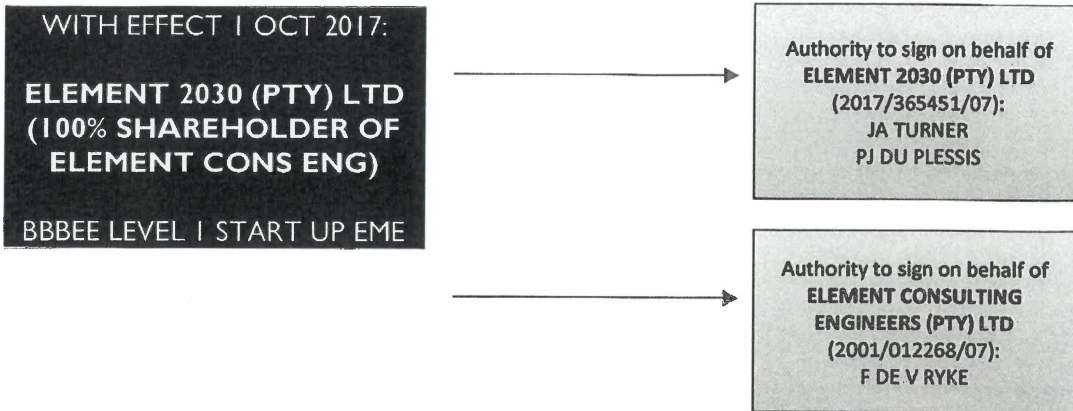
#### **FACILITATION AND NEW BUSINESS DEVELOPMENT**

- Project Investigations
- Project Planning (including Critical Path Analyses, Programming of Activities, Organization and Co- ordination and Community Liaison)
- Financial Control (including Cost Estimates, Cost Projections and Reports, Subsidy Applications and Cost Control)

#### **PROJECT MANAGEMENT**

- Project Management
- Contract Management
- Systems Engineering
- Quality Management
- Project Life Cycle Management
- Project Risk Management

**SHAREHOLDING AND DIRECTORS STRUCTURE**



**RESOURCES: ALL EXISTING ECE STAFF AND INFRASTRUCTURE AND TRACK RECORD**

DURBANVILLE, DURBAN, EAST LONDON, GEORGE, JOHANNESBURG, MBOMBELA, POLOKWANE, VREDENBURG

**CONTACT DETAIL OF DIRECTORS:**

Petrus (Jacques) du Plessis      083 270 6753  
Gary Daniels                              071 247 4703